



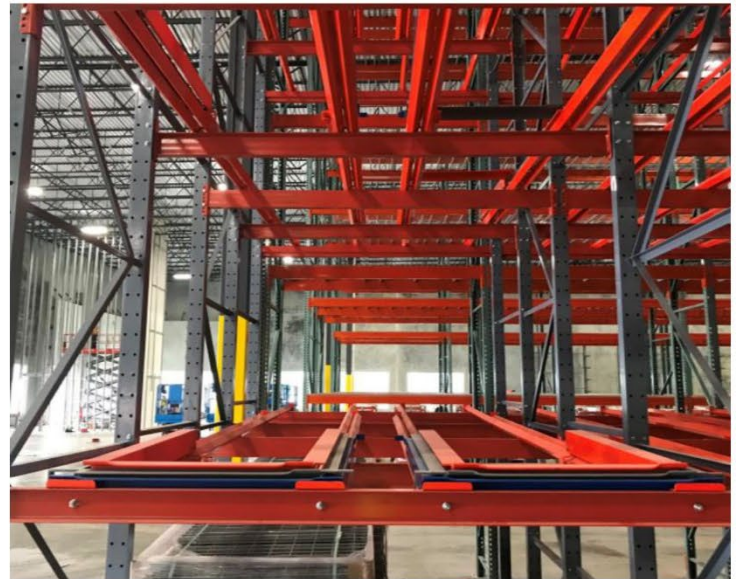
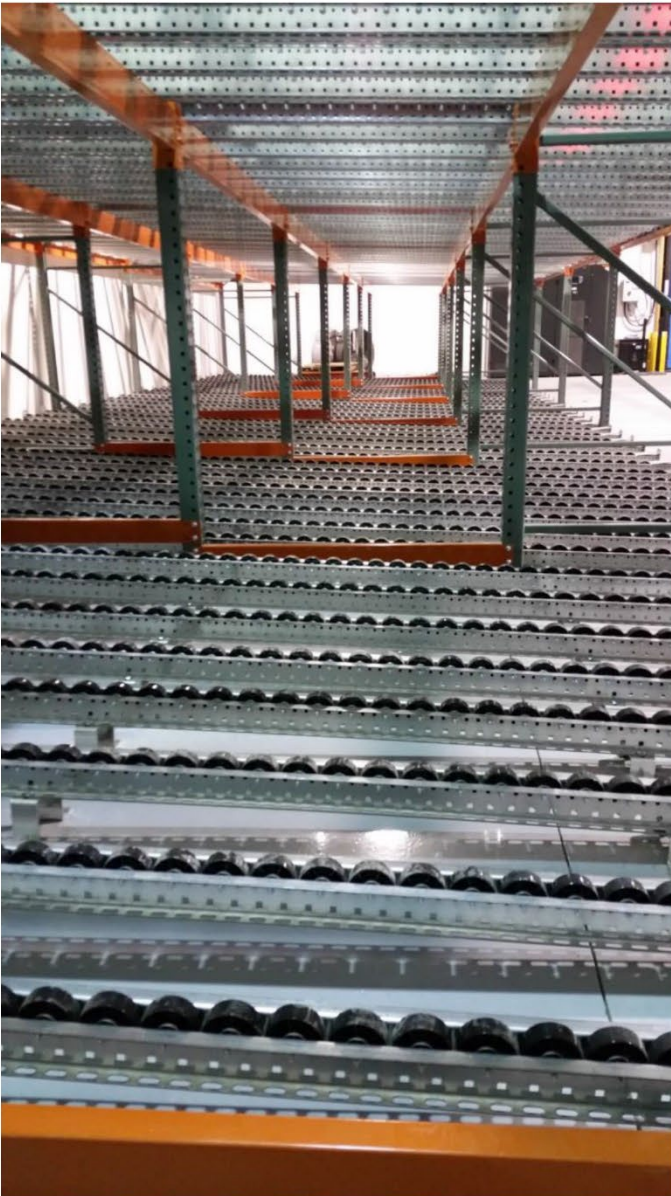
## Push Back Rack

Push back rack is a high-density storage solution. Offering a similar storage density to the drive-in rack, push-back pallet rack systems offer better selectivity and accessibility to a wider range of SKUs.

Pallets are stored in lanes and rest on a carts-on-rails system. Working from a single aisle, pallets are stored by “pushing back” previously placed pallets with a new pallet on the next cart position. When the front pallet is retrieved, gravity causes the next pallet to move forward into a ready position. This “last-in, first-out” system (per lane) reduces picking time when a large number of picking faces are required. Push-back rack systems can store from 2 to 6 pallets deep.

## Push Back Pallet Rack

---



Push Back Rack may solve your warehouse problem if you:

- Have pallets of the same size
- Want aisle access to each pick face
- Have a large number of SKUs
- Want to avoid lift trucks entering the rack

Push back rack is a first-in, last-out system, so it's not the right solution for those who need good stock rotation. To get high density with a first-in, first-out system, read more about pallet flow racks.